



The single-axis controller S 1 is a rugged switching device according IEC 947-5-1 EN 60947 DIN VDE 0660-200 for remote control and electro-hydraulic applications. The S 1 is resistant to oil, maritime climate, ozone and UV radiation.

Contact complement 0,5 A 110 V AC 15 res. 1,5 A 24 V DC 13
I min > 0,2 mA 2 V DC 12 Gold plated for max. load of 0,12 Watt (standard)

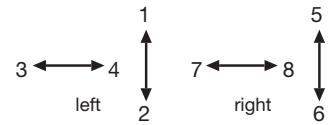
Mechanical life 6 million (operating cycles)
Permissible ambient temperature Operation -40° C to +60° C
Storage -50° C to +80° C

Climate resistance
Damp heat constant DIN IEC 68 part 2-3
Damp heat cyclic DIN IEC 68 part 2-30
Degree of protection front IP 65 IEC 529 DIN 40050

Technical data look catalog 5/100
Description data look catalog 5/002

Spindle block with schematic representation of the master controller installation and deflection directions.

Version shown for left-hand side installation (right-hand side installation is mirror image).

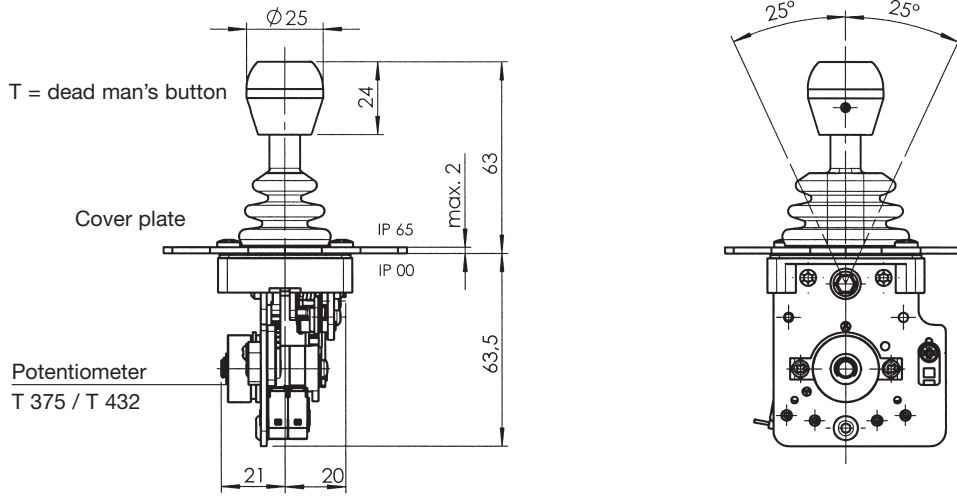


Deflection directions designated to DIN 15025

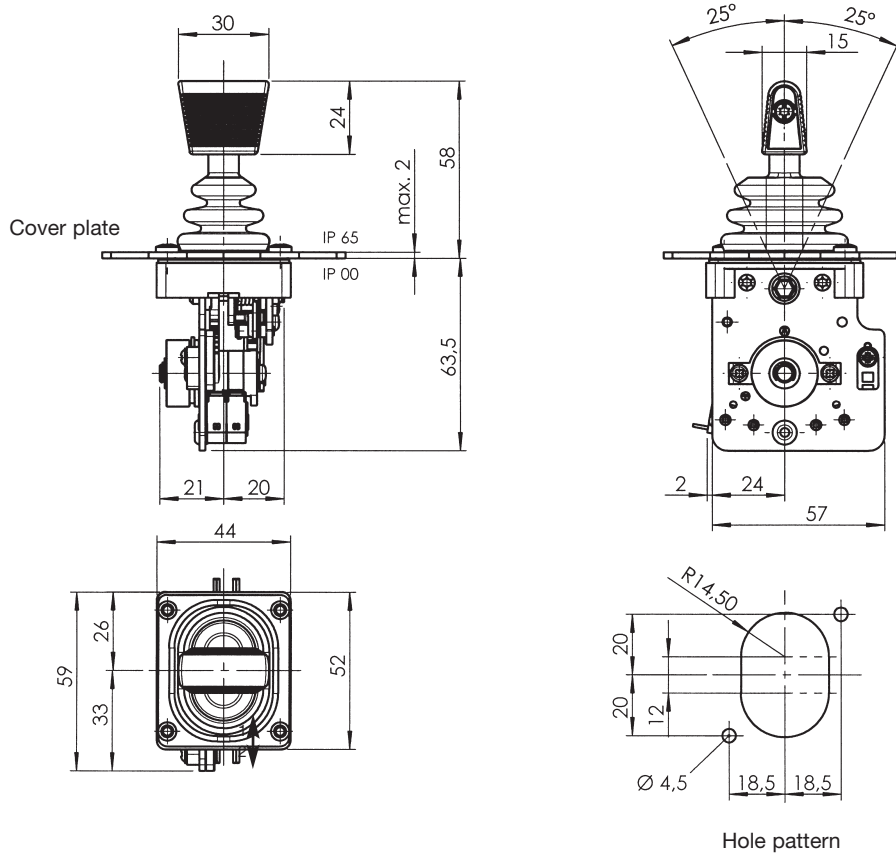
Pos.	S 1		Weight gramm	Part No. 5180...	Type	Price EURO
1			150		S 1	
2						
3						
4						
5						
10	Spring return in 0-position (include in the spindle block)				Z R	
11						
12						
13		Friction brake				
14						
20	Control-handle with knob solid GK 4				M T	
21	Control-handle with latch for mechanical zero interlock		50			
22	Control-handle with dead man's button 1 NO		80			
23						
24					GS 8	
25						
26	Control-handle with knob GS 8					
27						
28						
29						
30	Masterswitch switching sequence -0-	No. of contacts 2	20		01 02	
	Switching program according contact-arrangement MS look catalog 5/001 or to your contact-arrangement	4	40			
36	switching sequence 2-0-2					
44	Potentiometer e.t.c. each masterswitch with mounted Conductive-plastic potentiometer T 375, with centre tap linear life 10 ⁷ switching cycles resistance 2 x 5 kOhm 0,5 Watt wiper current max. 1 mA		20		P	
45	Conductive-plastic potentiometer T 430 with centre tap linear life 10 ⁷ switching cycles resistance 2 x 5 kOhm 2 conductive-plastic-contact way arrangement MSP 21 (catalog 5/001) 0,5 Watt wiper current max. 1 mA		25		P	
52	Housing look catalog 1/350					
60	Indicating labels not engraved with 2 arrows					
61	Engraved each 10 characters					
70	Command and indicating devices look catalog 1/360					



S 1 with knob solid GK 4



S 1 with knob GS 8



Example for type-sign





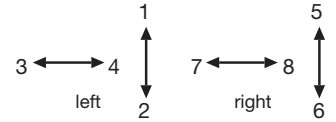
The single-axis controller S 14 is a rugged switching device according IEC 947-5-1 EN 60947 DIN VDE 0660-200 for remote control and hoisting applications. The S 14 is resistant to oil, maritime climate, ozone and UV radiation.

Contact complement 2 A 250 V AC 15 res. 1 A 24 V DC 13

Mechanical life 6 million (operating cycles)
Permissible ambient temperature Operation -40° C to +60° C
Storage -50° C to +80° C

Climate resistance
Damp heat constant DIN IEC 68 part 2-3
Damp heat cyclic DIN IEC 68 part 2-30
Degree of protection front IP 65 IEC 529 DIN 40050
Technical data look catalog 5/100
Description data look catalog 5/002

Spindle block with schematic representation of the master controller installation and deflection directions.
Version shown for left-hand side installation (right-hand side installation is mirror image).

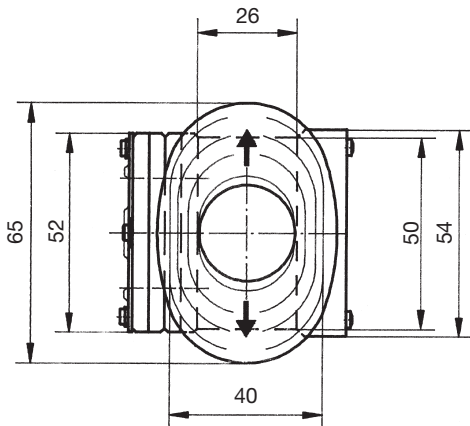
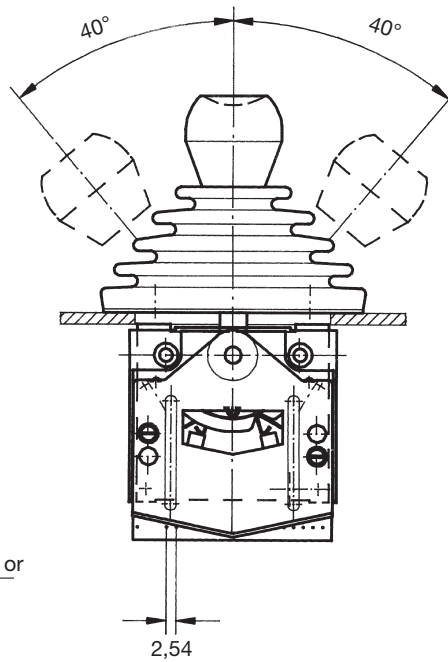
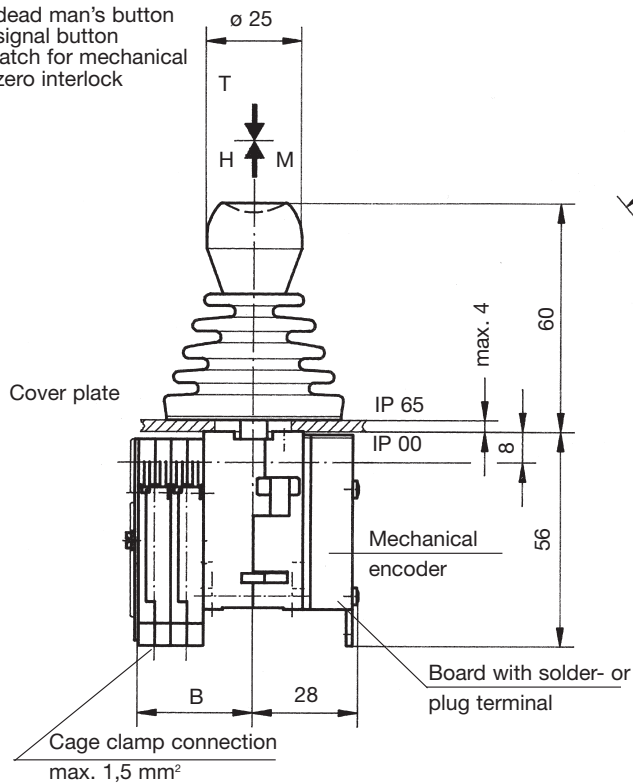


Deflection directions designated to DIN 15025

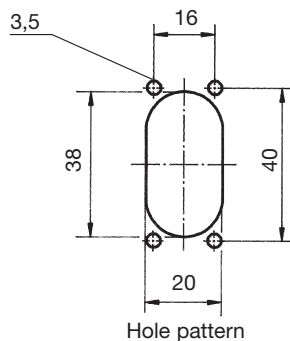
Pos.	S 14		Weight gramm	Part No. 5214...	Type	Price EURO
1			150		S 14	
2						
3						
4						
5						
10	Spring return in 0-position (include in the spindle block) Friction brake				Z	
11					R	
12						
13						
20	Control-handle with knob solid				M	
21	Control-handle with latch for mechanical zero interlock		50		T	
22	Control-handle with dead man's button 1 NO		80		H	
23	Control-handle with signal button 1 NO		80			
24						
25						
26						
27						
28	Control-handle long 80 mm					
29						
30	Masterswitch switching sequence 4-0-4 adjustable (with encoder 6-0-6)	No. of contacts 2	70		01	
31		4	130		02	
32	Direction 1-2 or 3-4	6	190		03	
33	Switching program according contact-arrangement MS... look catalog 5/001					
34	or to your contact-arrangement					
35						
36						
44	Mechanical encoder with mounted direction 1-2 or 3-4 life 5 x 10 ⁶ switching cycles, 0,5 Watt wiper current max. 1 mA Mechanical encoder MEC 1-2 male connector EA/02-10 contact-arrangement MS 26-0 look catalog 5/001 Conductive-plastic potentiometer with centre tap linear resistance 2 x 10 kOhm	C 61	30		C	
45	Mechanical encoder MEC 1-7 male connector EA / 10-10 contact-arrangement MS 26-0-1 look catalog 5/001 Conductive-plastic potentiometer with centre tap linear resistance 2 x 5 kOhm	C 62	20		C	
46	Mechanical encoder MEC 1-6 male connector EA / 09-10, 6 Bit Gray-Code	C 63	30		C	
47	Mechanical encoder MEC 1-6-5 male connector ER / 36-10 Power supply 24 V DC, output power impressed 4-20 mA	C 64	30		C	
48	Mechanical encoder MEC 1-6-8 male connector ER / 36-12 Power supply 24 V DC, output power impressed 0-20 mA	C 65	30		C	
49	Mechanical encoder MEC 1-10 male connector EA / 17-10 contact-arrangement MS21-0 + MS21 look catalog 5/001 Conductive-plastic potentiometer with centre tap Linear resistance 2 x 1,5 kOhm	C66	30		C	
52	Housing look catalog 1/350					
60	Indicating labels not engraved with 2 arrows					
61	Engraved each 10 characters					
70	Command and indicating devices look catalog 1/360					



T = dead man's button
H = signal button
M = latch for mechanical zero interlock



Type	No. of contacts	Dimension B
01	2	24
02	4	33
03	6	42



Example for type-sign

Single-axis controller

Dead man's button

Masterswitch direction 1-2

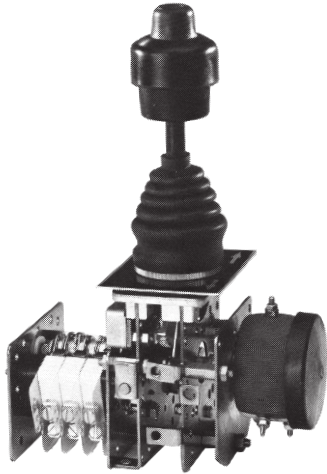
S 14 T -01 Z C - X



Special please to describe

Mechanical encoder MEC direction 1-2

Spring return direction 1-2



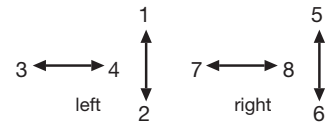
The single-axis controller S 2 is a rugged switching device according IEC 947-5-1 EN 60947 DIN VDE 0660-200 for electro-hydraulic applications. The modular design enables the switching device to be used universally. The S 2 is resistant to oil, maritime climate, ozone and UV radiation.

Contact complement 2 A 250 V AC 15 res. 3 A 24 V DC 13

Mechanical life S 2 6 million (operating cycles)
 Mechanical life SS 2 10 million (operating cycles)
 Permissible ambient temperature Operation -40° C to +60° C
 Storage -50° C to +80° C

Climate resistance
 Damp heat constant DIN IEC 68 part 2-3
 Damp heat cyclic DIN IEC 68 part 2-30
 Degree of protection front IP 54 IEC 529 DIN 40050
 Technical data look catalog 5/100
 Description data look catalog 5/002

Spindle block with schematic representation of the master controller installation and deflection directions. Version shown for left-hand side installation (right-hand side installation is mirror image).

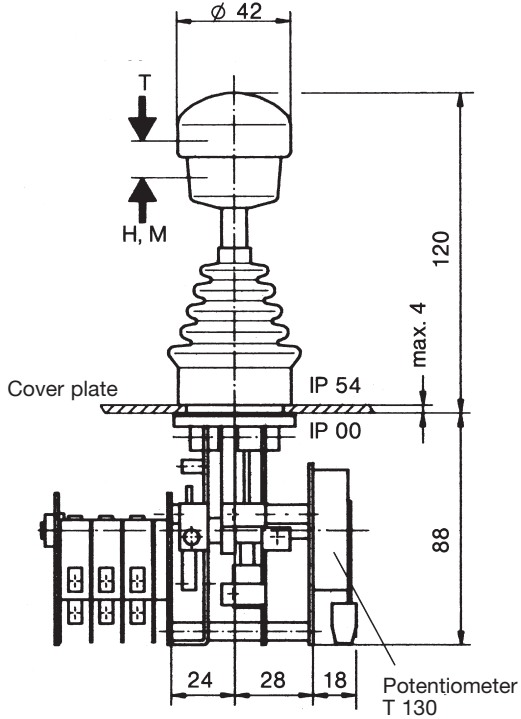


Deflection directions designated to DIN 15025

Pos.	S 2		Weight gramm	Part No. 5200...	Type	Price EURO
1			600		S 2	
2			650		SS 2	
3						
4						
5						
10	Gate special-shaped	(for position view) M 1699	60		P	
11	Spring return in 0-position		20		Z	
12	Friction brake adjustable		20		R	
13						
14						
20	Control-handle with knob solid				M	
21	Control-handle with latch for mechanical zero interlock		50		T	
22	Control-handle with dead man's button 1 NO		50		H	
23	Control-handle with signal button 1 NO		50		D	
24	Control-handle with push button 1 NO		60		DV	
25	Control-handle with flat push button 1 NO		60		B 5	
26	Control-handle with palm grip B 5		40		B 5T	
27	Control-handle with palm grip B 5 with push button top 1 NO		60			
28	Control-handle long or short 140, 100 mm					
29	More knobs, grips and T-grips with and without signal devices look catalog 1/280...					
30	Masterswitch switching sequence 5-0-5	No. of contacts 3	300		02	
31		5	330		03	
32		7	360		04	
33	Switching program according contact-arrangement MS... look catalog 5/001	9	390		05	
34	or to your contact-arrangement					
35						
36						
37	Micro change over contact (MZT1) positive opening (additional price)	1				
40	Potentiometer e.t.c. each masterswitch with mounted Wire-wound potentiometer T 130, with centre tap linear Life 10 ⁷ switching cycles resistance 2 x 0,5/1/2/5/10 kOhm, 1,5 Watt wiper current max. 10 mA		70		P	
41	Prepared for mounting potentiometer shaft 6 mm adjusting-angle 2 x 150°				(P)	
42	Prepared for mounting potentiometer e.t.c. adjusting-angle variable.				(P)	
43	more Potentiometer e.t.c. look catalog 1/240...					
50	Steel sheet housing B 200 masterswitch Gr. 05		1300		B	
51						
52	More housing look catalog 1/350					
60	Indicating labels not engraved with 2 arrows					
61	Engraved each 10 characters					
62						
70	Command and indicating devices look catalog 1/360					

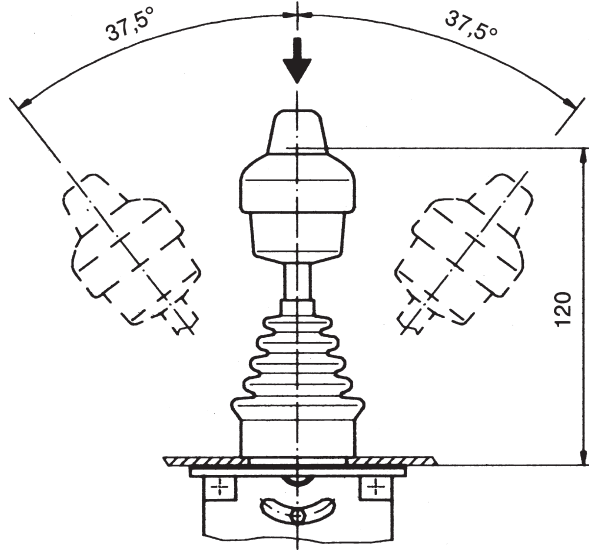


T = dead man's button
H = signal button
M = latch for mechanical zero interlock

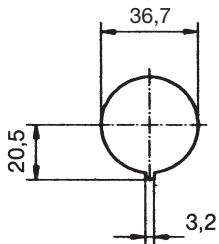
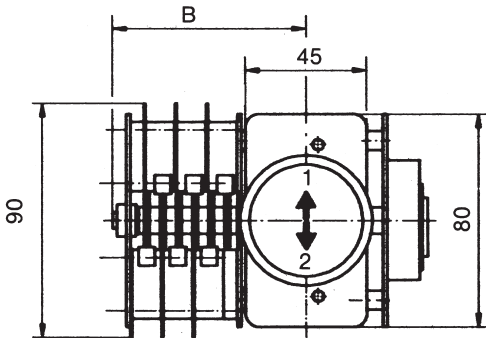


Knob solid

D = -push button

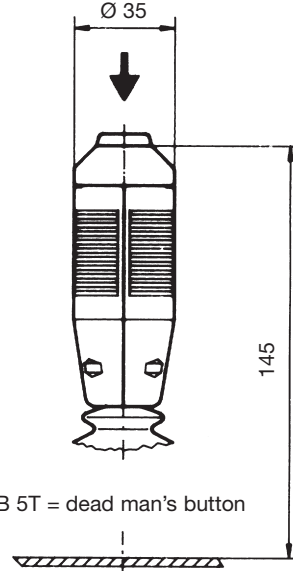


Type	No. of contacts	Dimension B
02	3	62
03	5	72
04	7	83
05	9	93



Hole pattern

Palm grip B 5



Example for type-sign

Single-axis controller

Dead man's button

Masterswitch direction 1-2

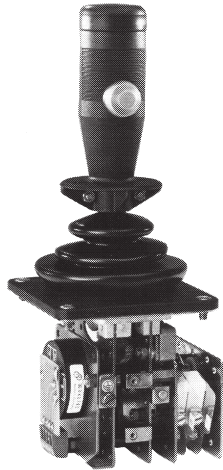
S 2 T -02 Z P - X



Special please to describe

Potentiometer e.t.c.

Spring return



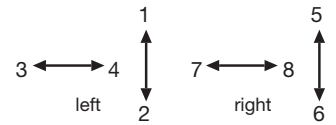
The single-axis controller S 21 is a rugged switching device according IEC 947-5-1 EN 60947 DIN VDE 0660-200 for electro-hydraulic applications. The modular design enables the switching device to be used universally. The S 21 is resistant to oil, maritime climate, ozone and UV radiation.

Contact complement 2 A 250 V AC 15 res. 3 A 24 V DC 13

Mechanical life S 21 6 million (operating cycles)
 Mechanical life SS 21 10 million (operating cycles)
 Permissible ambient temperature Operation -40° C to +60° C
 Storage -50° C to +80° C

Climate resistance
 Damp heat constant DIN IEC 68 part 2-3
 Damp heat cyclic DIN IEC 68 part 2-30
 Degree of protection front IP 54 IEC 529 DIN 40050
 Technical data look catalog 5/100
 Description data look catalog 5/002

Spindle block with schematic representation of the master controller installation and deflection directions.
 Version shown for left-hand side installation (right-hand side installation is mirror image).



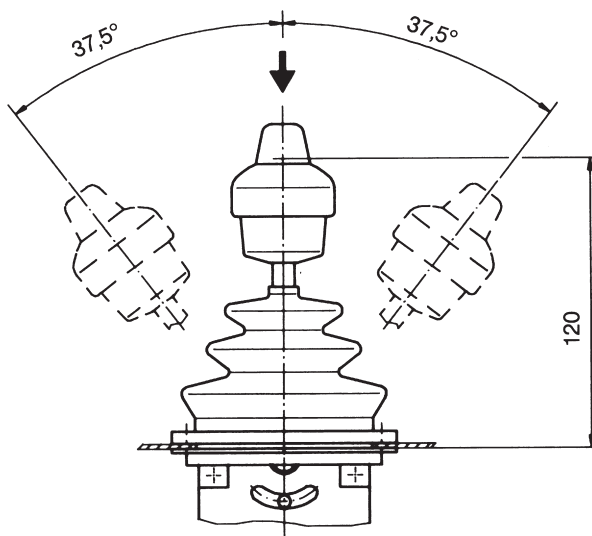
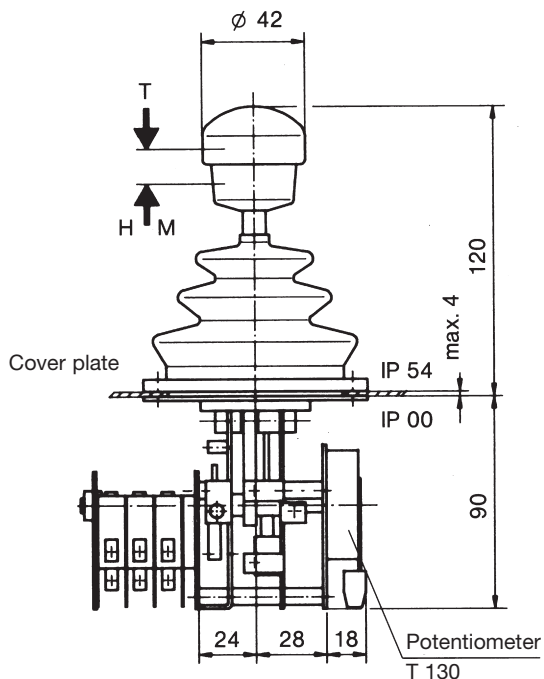
Deflection directions designated to DIN 15025

Pos.	S 21		Weight gramm	Part No. 5202...	Type	Price EURO
1			650		S 21	
2			650		SS 21	
3						
4						
5						
10	Spring return in 0-position Friction brake adjustable		20		Z	
11					R	
12						
13						
14						
20	Control-handle with knob solid					
21	Control-handle with latch for mechanical zero interlock		50		M	
22	Control-handle with dead man's button 1 NO		100		T	
23	Control-handle with signal button 1 NO		100		H	
24	Control-handle with push button 1 NO		110		D	
25	Control-handle with flat push button 1 NO		110		DV	
26	Control-handle with palm grip B 1		40		B 1	
27	Control-handle with palm grip B 1 with push button top 1 NO		60		B 1T	
28	Control-handle long or short 140, 100 mm					
29	More knobs, grips and T-grips with and without signal devices look catalog 1/280...					
30	Masterswitch switching sequence 5-0-5 Switching program according contact-arrangement MS... look catalog 5/001 or to your contact-arrangement	No. of contacts 3	300		02	
31		5	330		03	
32		7	360		04	
33		9	390		05	
34						
35						
36						
40	Potentiometer e.t.c. each masterswitch with mounted Wire-wound potentiometer T 130, with centre tap linear Life 10 ⁷ switching cycles resistance 2 x 0,5/1/2/5/10 kOhm, 1,5 Watt wiper current max. 10 mA		70		P	
41	Prepared for mounting potentiometer shaft 6 mm adjusting-angle 2 x 150°				(P)	
42	Prepared for mounting potentiometer e.t.c. adjusting-angle variable.				(P)	
43	more Potentiometer e.t.c. look catalog 1/240...					
50	Steel sheet housing B 200 masterswitch Gr. 05		1300		B	
51						
52	More housing look catalog 1/350					
60	Indicating labels not engraved with 2 arrows					
61	Engraved each 10 characters					
62						
70	Command and indicating devices look catalog 1/360					

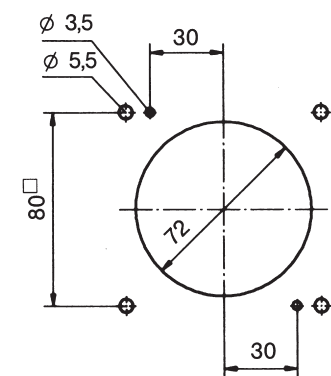
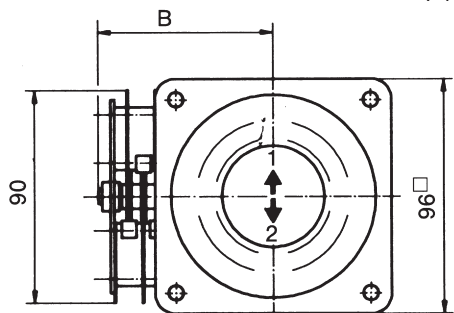
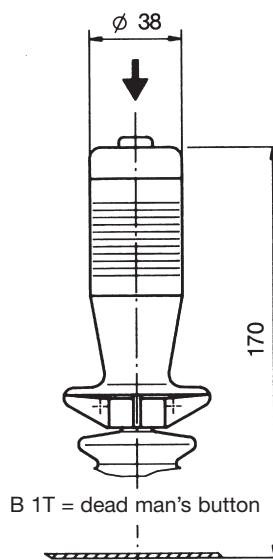


T = dead man's button
H = signal button
M = latch for mechanical zero interlock

Knob solid
D = push button



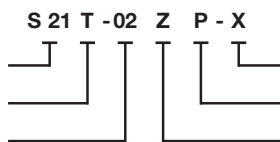
Palm grip B 1



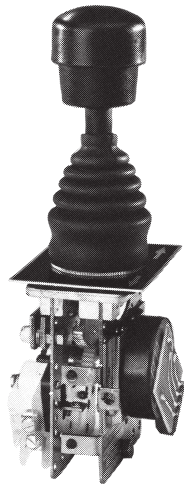
Hole pattern

Type	No. of contacts	Dimension B
02	3	62
03	5	72
04	7	83
05	9	93

Example for type-sign
Single-axis controller
Dead man's button
Masterswitch direction 1-2



Special please to describe
Potentiometer e.t.c.
Spring return



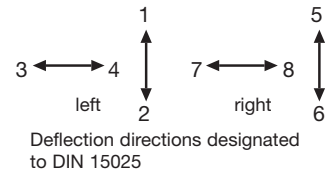
The single-axis controller S 22 is a rugged switching device according IEC 947-5-1 EN 60947 DIN VDE 0660-200 for electro-hydraulic applications. The modular design enables the switching device to be used universally. The S 21 is resistant to oil, maritime climate, ozone and UV radiation.

Contact complement 2 A 250 V AC 15 res. 3 A 24 V DC 13

Mechanical life S 22 6 million (operating cycles)
 Mechanical life SS 22 10 million (operating cycles)
 Permissible ambient temperature Operation -40° C to +60° C
 Storage -50° C to +80° C

Climate resistance
 Damp heat constant DIN IEC 68 part 2-3
 Damp heat cyclic DIN IEC 68 part 2-30
 Degree of protection front IP 54 IEC 529 DIN 40050
 Technical data look catalog 5/100
 Description data look catalog 5/002

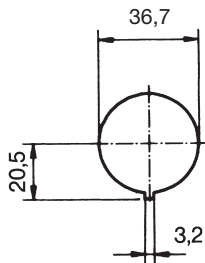
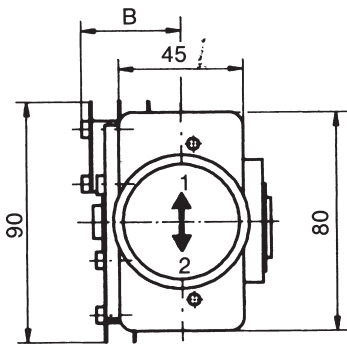
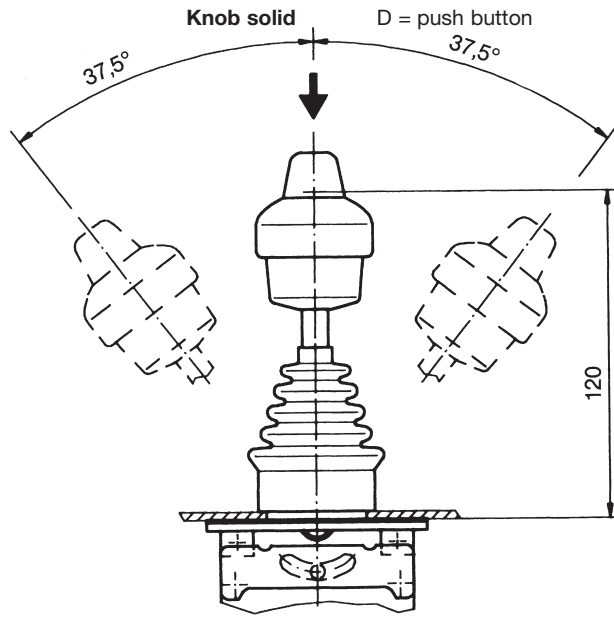
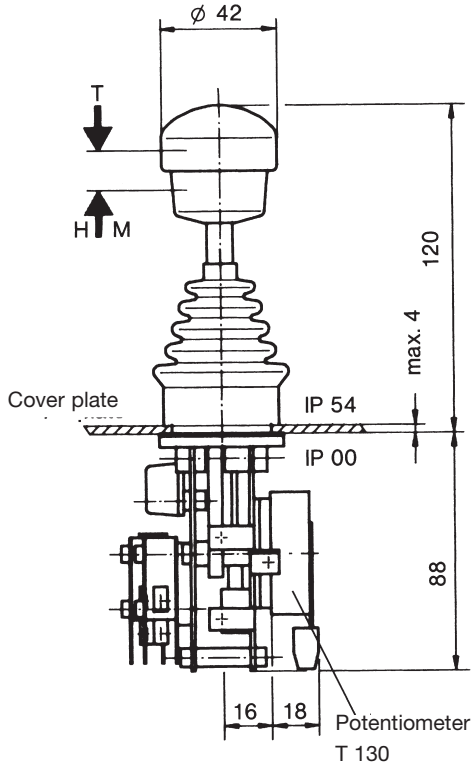
Spindle block with schematic representation of the master controller installation and deflection directions. Version shown for left-hand side installation (right-hand side installation is mirror image).



Pos.	S 22		Weight gramm	Part No. 5204...	Type	Price EURO
1			600		S 22	
2			650		SS 22	
3						
4						
5						
10	Spring return in 0-position					
11						
12		Friction brake adjustable	20		Z	
13			20		R	
14						
20	Control-handle with knob solid					
21	Control-handle with latch for mechanical zero interlock		50		M	
22	Control-handle with dead man's button 1 NO		50		T	
23	Control-handle with signal button 1 NO		50		H	
24	Control-handle with push button 1 NO		60		D	
25	Control-handle with flat push button 1 NO		60		DV	
26	Control-handle with palm grip B 1		40		B 5	
27	Control-handle with palm grip B 1 with push button top 1 NO		60		B 5T	
28	Control-handle long or short 140, 100 mm					
29	More knobs, grips and T-grips with and without signal devices look catalog 1/280...					
30	Masterswitch switching sequence -0-	No. of contacts 1	150		1	
31		2	170		2	
32		3	190		3	
33		4	210		4	
34	Switching program according contact-arrangement MS... look catalog 5/001 or to your contact-arrangement					
35						
36	Switching sequence 2-0-2					
40	Potentiometer e.t.c. each masterswitch with mounted Wire-wound potentiometer T 130, with centre tap linear Life 10 ⁷ switching cycle resistance 2 x 0,5/1/2/5/10 kOhm, 1,5 Watt wiper current max. 10 mA		70		P	
41	Prepared for mounting potentiometer shaft 6 mm adjusting-angle 2 x 150°				(P)	
42	Prepared for mounting potentiometer e.t.c. adjusting-angle variable.				(P)	
43	more Potentiometer e.t.c. look catalog 1/240...					
50	Steel sheet housing B 200 masterswitch Gr. 4		1300		B	
51						
52	More housing look catalog 1/350					
60	Indicating labels not engraved with 2 arrows					
61	Engraved each 10 characters					
62						
70	Command and indicating devices look catalog 1/360					

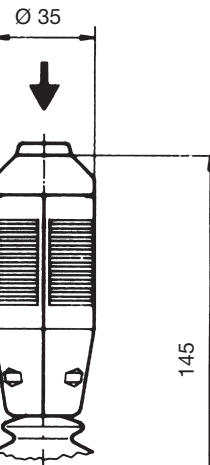


T = dead man's button
H = signal button
M = latch for mechanical zero interlock



Hole pattern

Palm grip B 5



B 5T = dead man's button

Type	No. of contacts	Dimension B
1	1	25
2	2	31
3	3	36
4	4	42

Example for type-sign

Single-axis controller

Dead man's button

Masterswitch direction 1-2

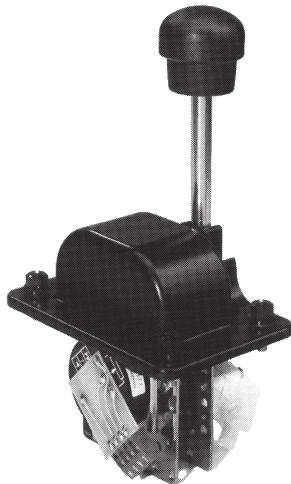
S 22 T - 2 Z P - X



Special please to describe

Potentiometer e.t.c.

Spring return



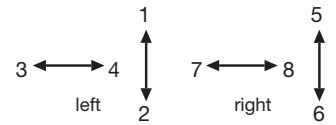
The single-axis controller S 23 is a rugged switching device according IEC 947-5-1 EN 60947 DIN VDE 0660-200 for electro-hydraulic applications and offshore. The modular design enables the switching device to be used universally. The S 23 is resistant to oil, maritime climate, ozone and UV radiation.

Contact complement 2 A 250 V AC 15 res. 3 A 24 V DC 13

Mechanical life 6 million (operating cycles)
Permissible ambient temperature Operation -40° C to +60° C
Storage -50° C to +80° C

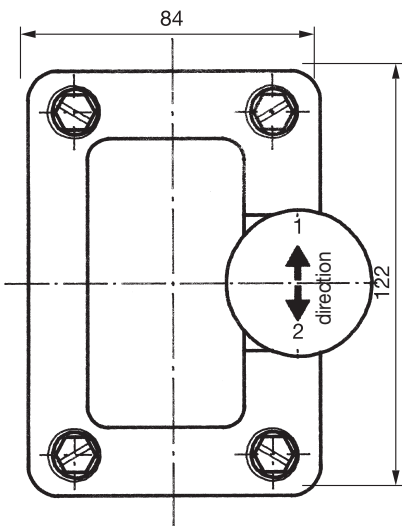
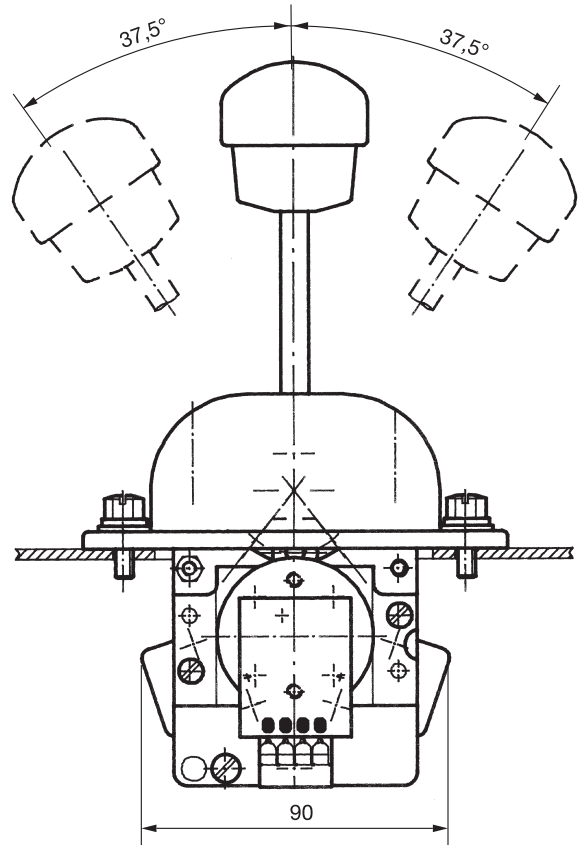
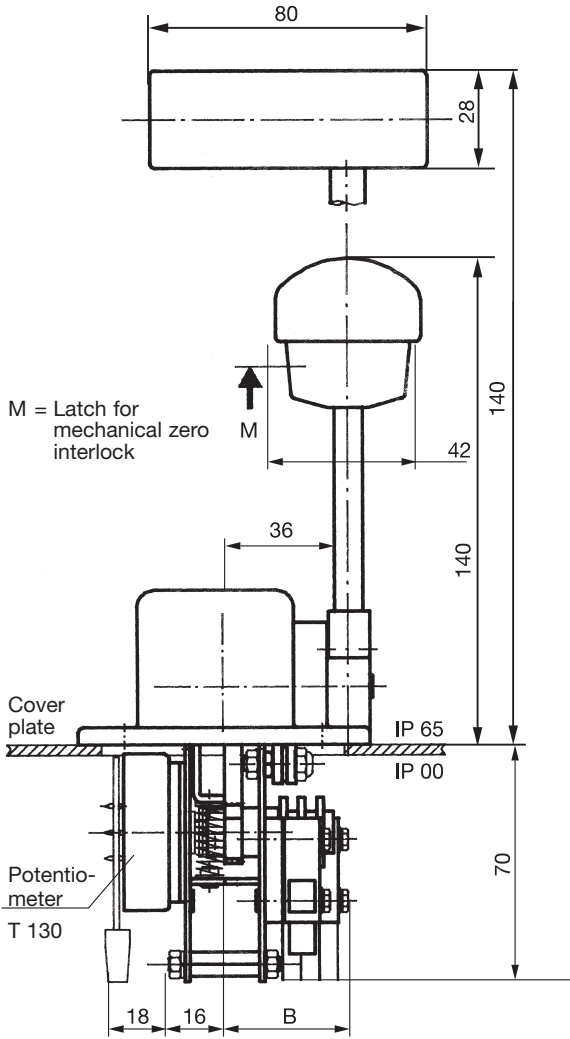
Climate resistance
Damp heat constant DIN IEC 68 part 2-3
Damp heat cyclic DIN IEC 68 part 2-30
Degree of protection front IP 65 IEC 529 DIN 40050
Technical data look catalog 5/100
Description data look catalog 5/002

Spindle block with schematic representation of the master controller installation and deflection directions. Version shown for left-hand side installation (right-hand side installation is mirror image).

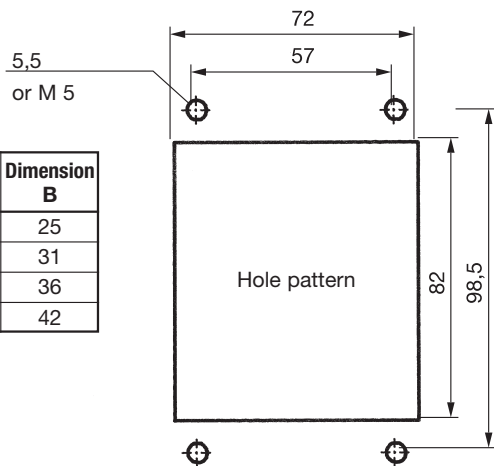


Deflection directions designated to DIN 15025

Pos.	S 23		Weight gramm	Part No. 5208...	Type	Price EURO	
1			700		S 23		
2							
3							
4							
5							
10	Spring return in 0-position		20		Z		
11							
12		Friction brake adjustable	20		R		
13							
14							
20	Control-handle with knob solid		50		M		
21		Control-handle with latch for mechanical zero interlock					
22	Control-handle with T-grip		40		Q		
23							
24							
25							
26							
27							
28		Control-handle long or short 160, 120 mm					
29							
30	Masterswitch switching sequence -0-	No. of contacts 1	150		1		
31		2	170		2		
32		3	190		3		
33		4	210		4		
34	Switching program according contact-arrangement MS... look catalog 5/001 or to your contact-arrangement						
35	Switching sequence 2-0-2						
36							
40		Potentiometer e.t.c. each masterswitch with mounted		70		P	
41		Wire-wound potentiometer T 130, with centre tap linear Life 10 ⁷ switching cycles resistance 2 x 0,5/1/2/5/10 kOhm, 1,5 Watt wiper current max. 10 mA				(P)	
42	Prepared for mounting potentiometer shaft 6 mm adjusting-angle 2 x 150°				(P)		
43	Prepared for mounting potentiometer e.t.c. adjusting-angle variable. more Potentiometer e.t.c. look catalog 1/240...						
50	Steel sheet housing B 200 masterswitch Gr. 4		1300		B		
51	More housing look catalog 1/350						
52							
60	Indicating labels not engraved with 2 arrows						
61	Engraved each 10 characters						
62							
70	Command and indicating devices look catalog 1/360						



Type	No. of contacts	Dimension B
1	1	25
2	2	31
3	3	36
4	4	42



Example for type-sign

Single-axis controller

Mechanical zero interlock

Masterswitch direction 1-2

S 23 M - 2 Z P - X



Special please to describe

Potentiometer e.t.c.

Spring return



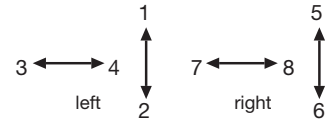
The single-axis controller S 3 is a rugged switching device according IEC 947-5-1 EN 60947 DIN VDE 0660-200 for nautical navigation applications. The modular design enables the switching device to be used universally. The S 3 is resistant to oil, maritime climate, ozone and UV radiation.

Contact complement 0,5 A 110 V AC 15 res. 1,5 A 24 V DC 13
I min > 0,2 mA 2 V DC 12 Gold plated for max. load of 0,12 Watt (standard)

Mechanical life 12 million (operating cycles)
Permissible ambient temperature Operation -40° C to +60° C
Storage -50° C to +80° C

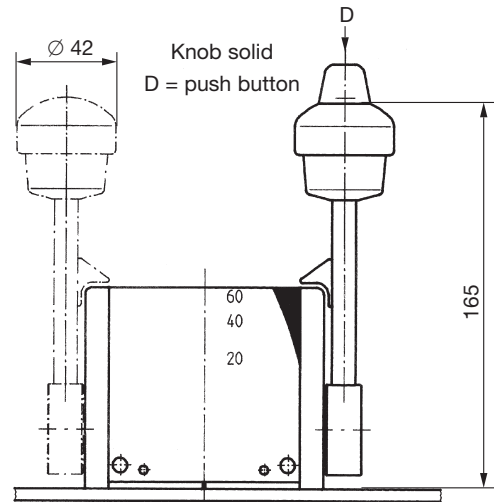
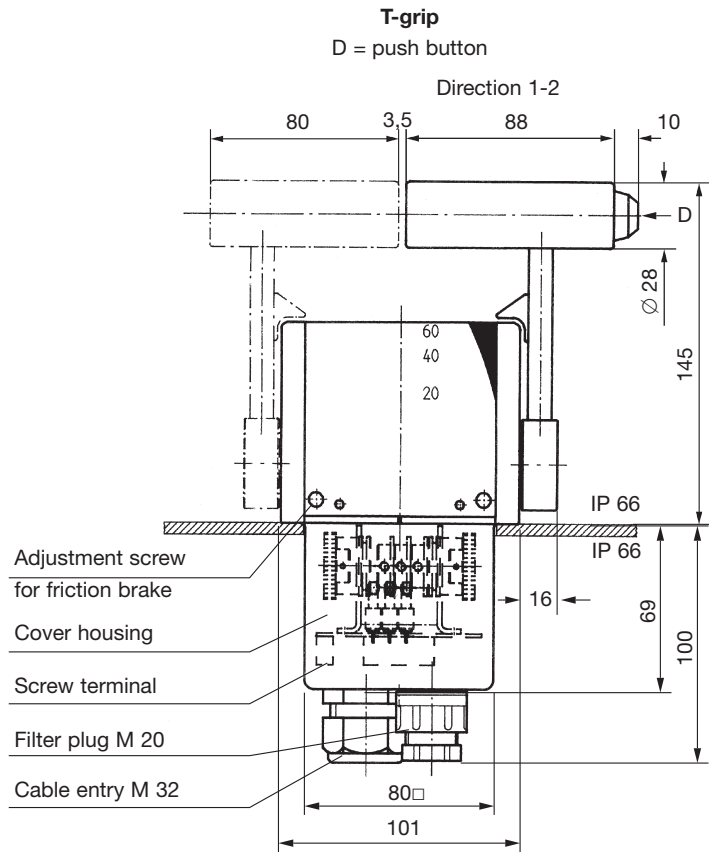
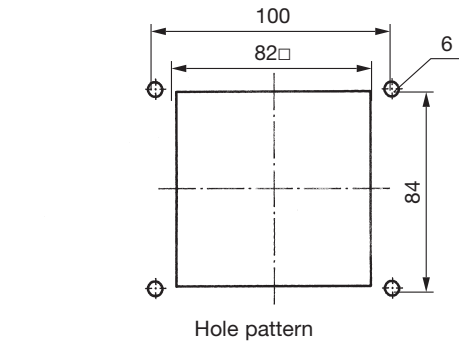
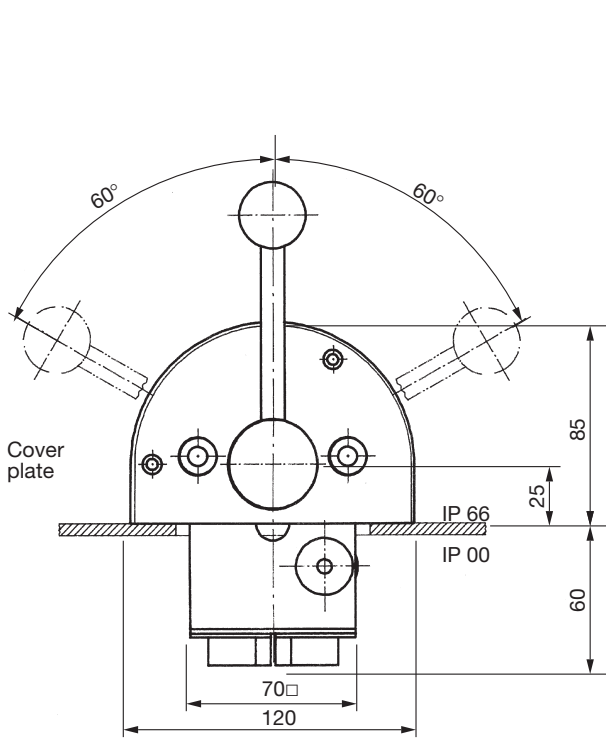
Climate resistance
Damp heat constant DIN IEC 68 part 2-3
Damp heat cyclic DIN IEC 68 part 2-30
Degree of protection front IP 66 IEC 529 DIN 40050

Technical data look catalog 5/100
Description data look catalog 5/002
Spindle block with schematic representation of the master controller installation and deflection directions.
Version shown for left-hand side installation (right-hand side installation is mirror image).

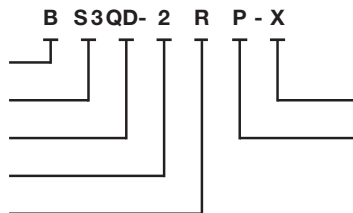


Deflection directions designated to DIN 15025

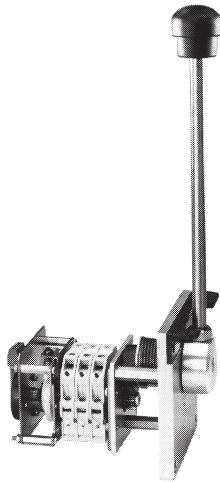
Pos.	S 3		Weight gramm	Part No. 5212...	Type	Price EURO			
1			2700		S 3				
2									
3									
4									
5									
10	Spring return in 0-position		30		Z				
11									
12							Friction brake adjustable	30	R
13									
14									
20	Control-handle with knob solid								
21									
22									
23									
24							Control-handle with push button 1 NO	110	D
25									
26							Control-handle with T-grip	40	Q
27	Control-handle with T-grip and push button side 1 NO	60	QD						
28	Control-handle long or short 180, 140 mm								
29									
30	Masterswitch switching sequence -0-	No. of contacts	1	20	1				
31			2	40	2				
32			3	60	3				
33			Direction 1-2 or 3-4						
34			Switching program according contact-arrangement MS... look catalog 5/001 or to your contact-arrangement						
35			Switching sequence special						
36									
40	Potentiometer e.t.c. each masterswitch with mounted Conductive-plastic potentiometer T 246, with centre tap linear Life 10 ⁷ switching cycles resistance 2 x 5 kOhm, 0,5 Watt wiper current max. 1 mA		70		P				
41							Prepared for mounting potentiometer shaft 6 mm adjusting-angle 2 x 75°	(P)	
42							Prepared for mounting potentiometer e.t.c. adjusting-angle variable.	(P)	
43							more Potentiometer e.t.c. look catalog 1/240...		
50	Cover housing		300		B				
51			Filter plug M 20 for air-condition				20		
52			Cable entry M 32 with anti-kink protection				30		
53									
54									
55									
56									
60	Indicating label eloxal aluminium plate silvery (include in the spindle block)								
61							Engraved each 10 characters		



Example for type-sign
Cover housing
Single-axis controller
T-grip with push button
Masterswitch direction 1-2
Friction brake direction 1-2



Special please to describe
Potentiometer e.t.c. direction 1-2



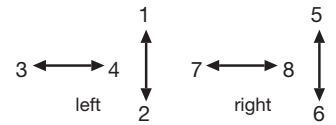
The single-axis controller S 6 is a rugged switching device according IEC 947-5-1 EN 60947 DIN VDE 0660-200 for hoisting applications. The modular design enables the switching device to be used universally. The S 6 is resistant to oil, maritime climate, ozone and UV radiation.

Contact complement 2 A 250 V AC 15 res. 1 A 24 V DC 13 (standard) or 4 A 250 V AC 15 (special)

Mechanical life 10 million (operating cycles)
Permissible ambient temperature Operation -40° C to +60° C
Storage -50° C to +80° C

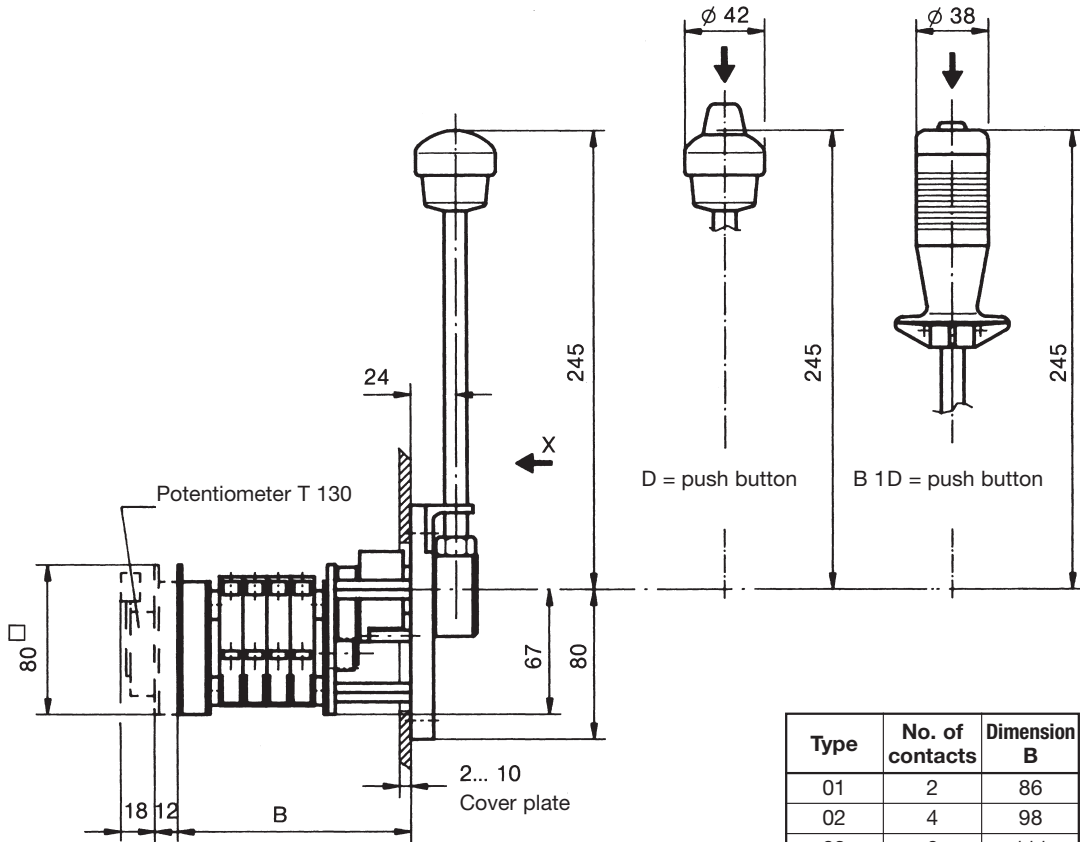
Climate resistance
Damp heat constant DIN IEC 68 part 2-3
Damp heat cyclic DIN IEC 68 part 2-30
Degree of protection front IP 54 IEC 529 DIN 40050
Technical data look catalog 5/100
Description data look catalog 5/002

Spindle block with schematic representation of the master controller installation and deflection directions.
Version shown for left-hand side installation (right-hand side installation is mirror image).

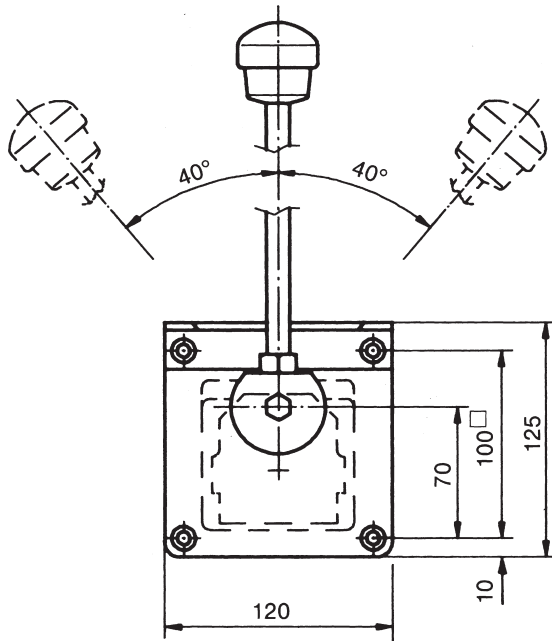


Deflection directions designated to DIN 15025

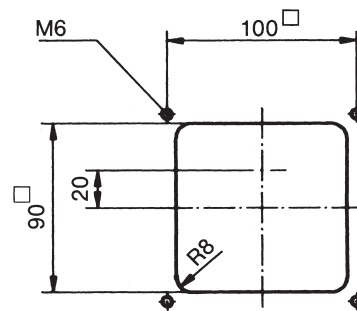
Pos.	S 6		Weight gramm	Part No. 5216...	Type	Price EURO
1			960		S 6	
2						
3						
4						
5						
10	Spring return in 0-position Friction brake adjustable		110		Z	
11						
12			30		R	
13						
20	Control-handle with push button 1 NO with flexible cable Control-handle with palm grip B 1 Control-handle with palm grip B 1 with push button top 1 NO Control-handle long or short 265, 225 mm		110		D	
21						
22			40		B 1	
23			60		B 1D	
24						
25						
26						
30	Masterswitch switching sequence 4-0-4 Direction 1-2 or 3-4 Switching program according contact-arrangement MS... look catalog 5/001 or to your contact-arrangement Switching sequence 5-0-5 or 6-0-6	No. of contacts 2	290		01	
31		4	350		02	
32		6	410		03	
33		8	470		04	
34		10	530		05	
35		12	590		06	
36						
40	Potentiometer e.t.c. each masterswitch with mounted Wire-wound potentiometer T 130, with centre tap linear Life 10 ⁷ switching cycles resistance 2 x 0,5/1/2/5/10 kOhm, 1,5 Watt wiper current max. 10 mA Prepared for mounting potentiometer shaft 6 mm adjusting-angle 2 x 150° Prepared for mounting potentiometer e.t.c. adjusting-angle variable. more Potentiometer e.t.c. look catalog 1/240...		70		P	
41					(P)	
42					(P)	
43						
50	More housing look catalog 1/350					
51						
52						
60	Indicating labels not engraved with 2 arrows Engraved each 10 characters					
61						
62						
70	Command and indicating devices look catalog 1/360					



Type	No. of contacts	Dimension B
01	2	86
02	4	98
03	6	111
04	8	123
05	10	136
06	12	148

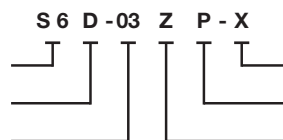


View X



Hole pattern

Example for type-sign
Single-axis controller
Push button
Masterswitch direction 1-2



Special please to describe
Potentiometer e.t.c.
Spring return