



INFOCOM AUTOMATION

2026



INFOCO LTD expertise



- Experience 30 years on the market
- 1300+ completed projects all over the world
- 240+ employees in the company
- International certificates: ISO 9001:2015, ISO 14001:2015, OHSAS18001:2007
- Partner SIEMENS Solution:
 - Factory Automation
 - Drives & Motion
 - Process Control System (PCS 7)
 - SIEMENS Digital Industries Software Partner
 - SIVACON Technology Partner



INFOCOM LTD competencies



- High-risk operations for electrical units and equipment up to 330 kV



- Design documentation & Software development for Automation (PLC/ SCADA) and IT production management, including MES level

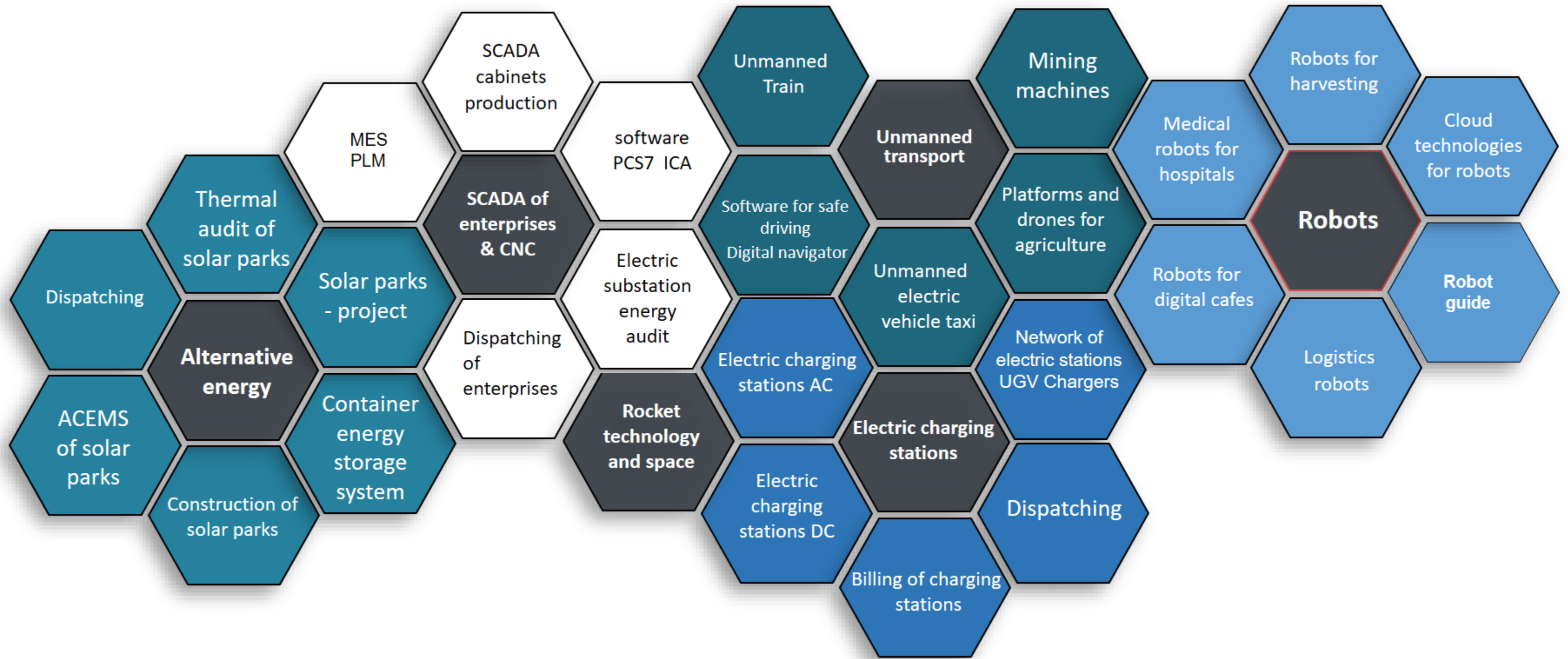


- Assembly and supply of cabinets for SCADA, CMS and various power distribution cabinets 0.4 kV under the SIVACON licence by SIEMENS

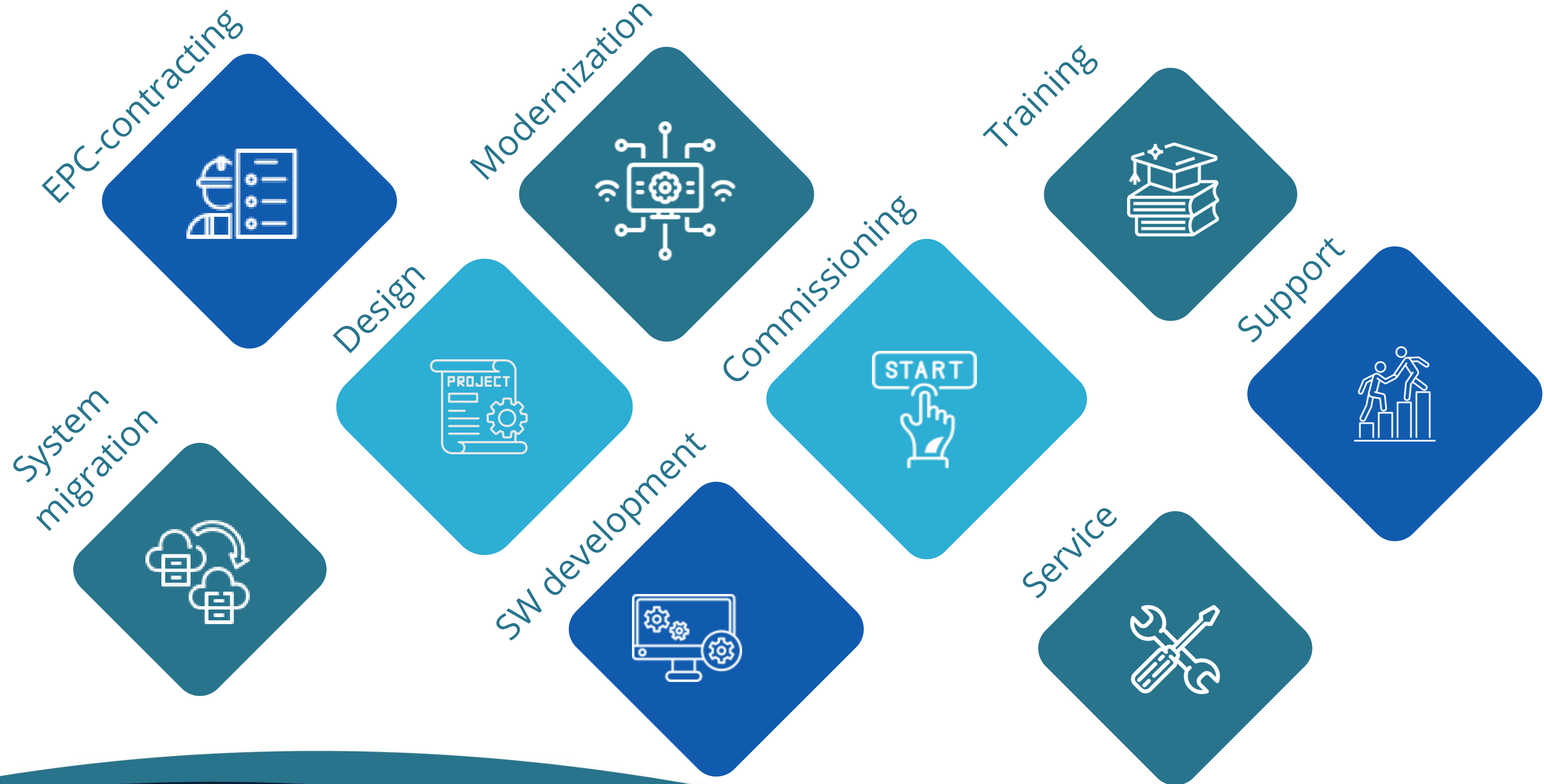


- Mounting, adjustment and commissioning of equipment, technical support and staff training
- Equipment supply from the world's leading manufacturers

INFOCOM LTD's development & activity areas



Company specialization



A world map with a dark blue background. The landmasses are shown in a light grey color. Several countries are highlighted in a vibrant orange color. These include the United States, Canada, Mexico, the United Kingdom, France, Germany, Italy, Spain, Portugal, Greece, Turkey, India, China, Japan, South Korea, and several countries in Africa and South America. The text '40+ countries' is overlaid on the left side of the map.

40+
countries

1300+
projects

INFOCOM LTD competencies according to ISA-95



Expert knowledge in the following areas

Metallurgy

- Ferrous metals production
- Pipe production
- Non-ferrous metals production
- Rolled metal products

Food & Beverage

- Fat & oil production
- Cheese and butter
- Dairy
- Brewery
- Tobacco
- Confectionery

Chemical

- Pharmaceutical
- Organic chemistry
- Inorganic chemistry
- Petrochemicals

Mechanical

- Automobile
- Machine tool industry
- Robotics
- Lifting & transport engineering

Oil&Gas

- Oil industry
- Gas industry

Energy

- Hydroelectricity
- Alternative energy (Solar, Wind, Bio)
- Energy storage (BESS)

Infrastructure

- Civil engineering
- Transport systems
- Access control systems
- Building monitoring & dispatching

Our partners all around the world



INFOCOM LTD is a partner of component manufacturers

SIEMENS

FESTO

Schneider
Electric

ELECTRO-SENSORS

Endress+Hauser 

ABB

RITTAL

ePLAN

PHOENIX
CONTACT

EATON
Powering Business Worldwide

SICK
Sensor Intelligence.

LAPP KABEL

HELUKABEL

Weidmüller

MOELLER
An Eaton Brand

PEPPERL+FUCHS
SENSING YOUR NEEDS

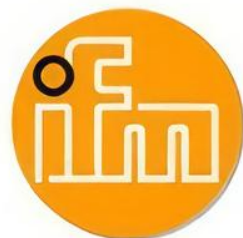
WAGO
INNOVATIVE CONNECTIONS

DKC

KROHNE

Lovato
electric
ENERGY AND AUTOMATION

EMERSON



lika

Rexroth
Bosch Group

WIKAI

Rockwell
Automation

Allen-Bradley

Staff structure as of 01.01.2026

No	Department	No of persons
1	Automation system department	25
2	IT-technology department	22
3	Design & Engineering Department	52
4	Production Department	61
5	Commercial Department	31
6	Maintenance & Repair Department	1
7	Financial Department	12
8	Administrative-Economic Department	28
9	Administration	9
	Total:	241

Qualification in Automation

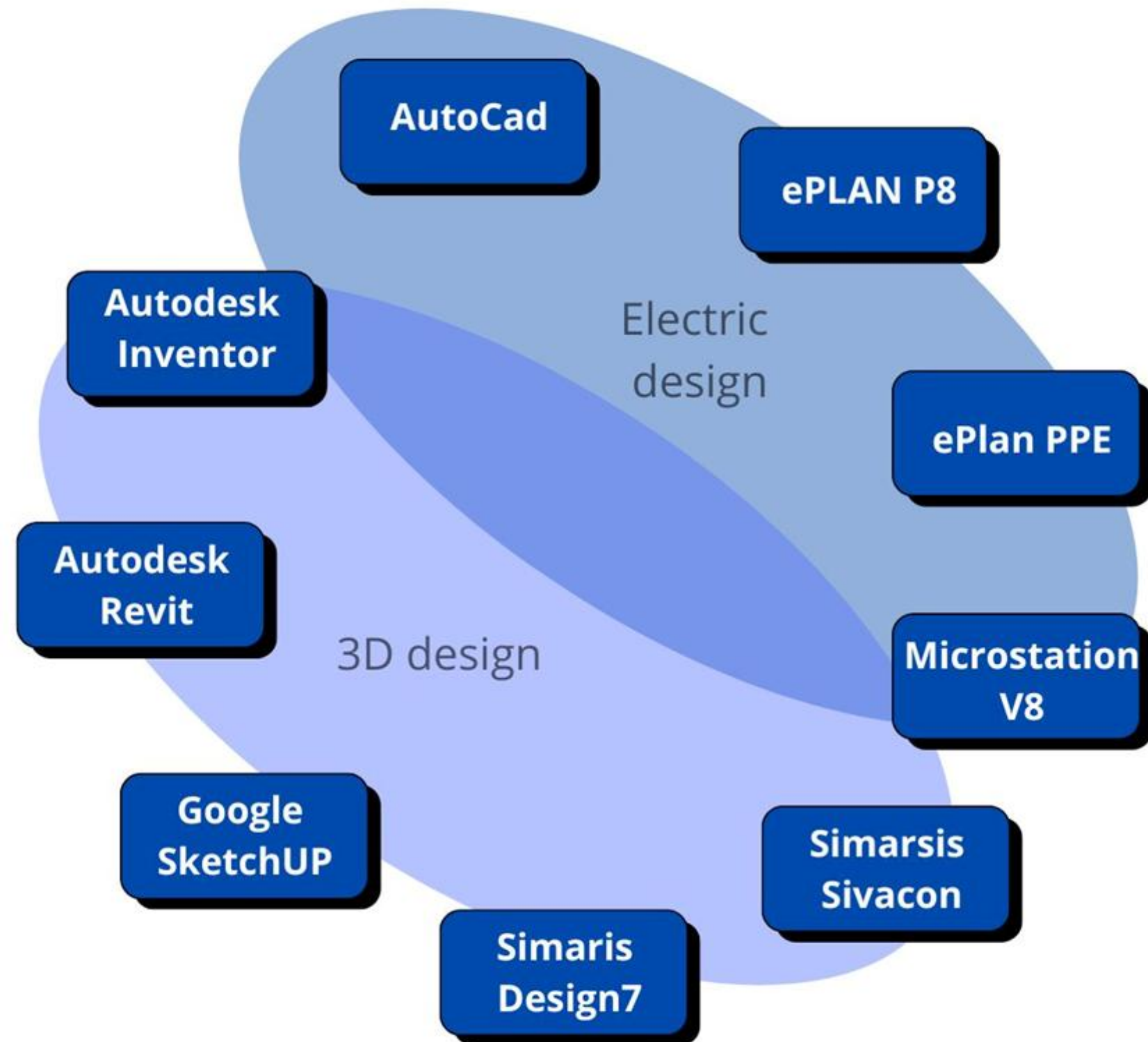
PLC	SCADA	Operator's panel	Drives	Industrial Network
<ul style="list-style-type: none"> •Siemens Simatic S7-200, S7-300 (F), S7-400 (H, FH), S7-1200, S7-1500 •Schneider Electric Modicon TSX, Quantum, TSX Premium •Phoenix Contact microcontroller class 100, compactcontroller class 300 •Allen Bradley ControlLogix 	<ul style="list-style-type: none"> •Siemens Simatic WinCC WinCC Flexible, WinCC OA •Schneider Electric Citect •Phoenix Contact Visu+ •Allen Bradley RSView •Wonderware InTouch •AdAstrATrace Mode 	<ul style="list-style-type: none"> •Siemens Simatic OP (all models), TP(all models), MP(all models) •Phoenix Contact (all models) •Allen Bradley PanelView 	<ul style="list-style-type: none"> •Siemens Simovert Simodrive Sinamics DCM G-Family S-Family •Schneider Electric Altivar •DanfossVLT •ABB ACS,DCS •Mitsubishi Electric A & E series 	<ul style="list-style-type: none"> •Profibus (DP, PA, FMS) •ASI •Ethernet •ProfiNet •ModBus(RTU, ASCII, TCP)



Our Advantages

- 30 years on the automation market
- Certified under ISO 9001 quality management system
- Certified under SIEMENS Engineering Standard: Solution Partner, Siemens project Audit, Simatic IT
- Application of innovative technical solutions and international projects experience
- Young and experienced team, average age is 30+
- Experience in implementing of new management systems and knowledge of old ones

Qualification in designing



Controllers

- Simatic S7-1200/1500; Simatic S7-400/400F/FH/
- SimaticS7-200, Siplus 300, Simatic S7-300/300C/300T/300F/



CNC systems

- SINUMERIK 802/840 SINUMERIK 810D/840D pl
- SINUMERIK 840D sl SINUMERIK 808D/828D



Weighting & dosing systems

- SIWAREX U/CS/MS/FTA/FTC/M/CF



Frequency converters

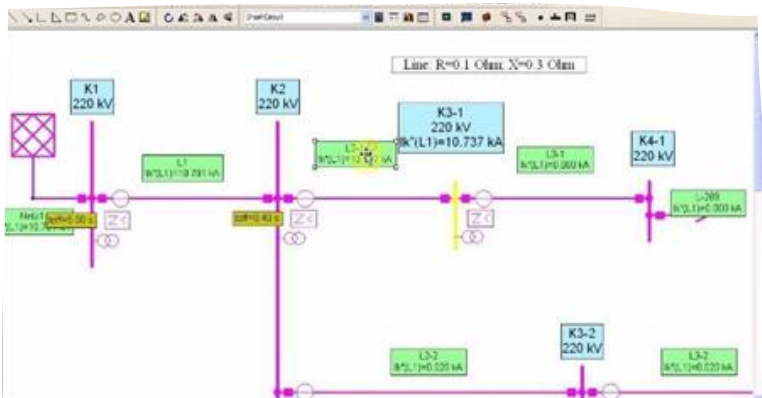
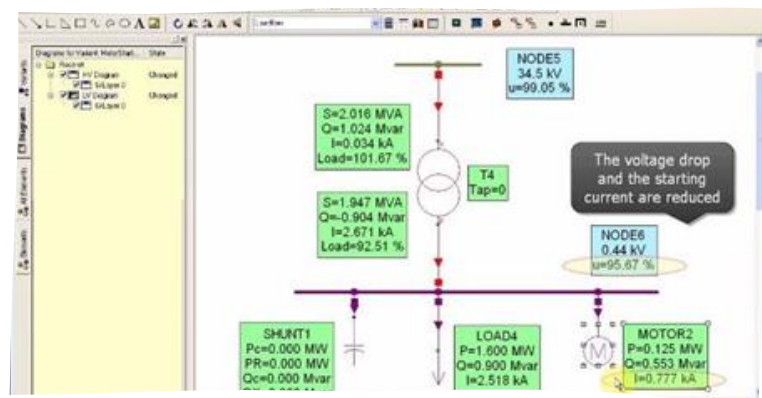
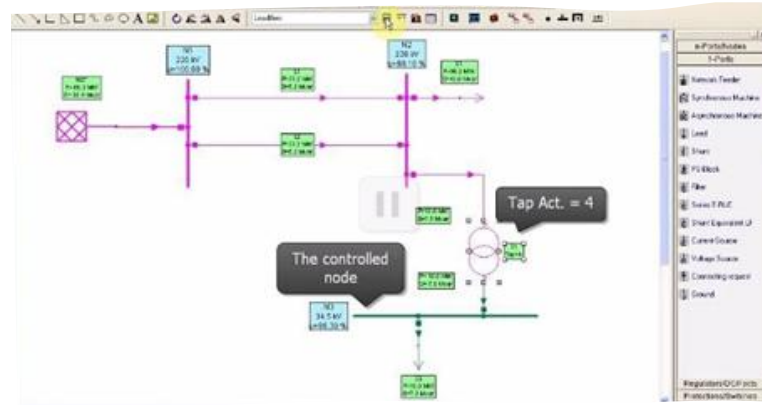
- SIMOVERT MASTERDRIVES,
- SIMODRIVE, SINAMICS S/G, MICROMASTER
- Scneider, Danfoss



ICA

- Sensors
- Meters etc.

Analysis & Optimization of electric mains voltage in NEPLAN & ETAP



- Calculations of short circuit
- Calculations of flow-distributed load
- Reliability studies
- Maintenance planning
- Dynamic starting of motors
- Harmonic analysis
- Determination of protection distances value
- Selectivity analysis
- Stability calculation
- Voltage stability
- Low level signal stability
- Load optimisation
- Network transformation
- Cost-effectiveness analysis
- Calculation of the pipeline system
- Time-based modelling
- Pressure distribution profiles
- Establishing GIS/NIS communication

All planning modules come from a single source, no additional coordination work is required



Engineering-level calculations in CANECO

CANECO — is a specialized software for electrical calculations, which is officially accepted by inspection and certification bodies in many European countries.



What is calculated?

- Calculation of cable lines
(cross-section, length, laying method);
- Voltage drop check;
- Short-circuit current calculation;
- Selection of circuit breakers & fuses;
- Checking the selectivity and coordination of protections;
- Compliance with thermal & electrodynamic loads



Where is applied?

- Greenfield projects
- Reconstructions & Modernizations
- Project validation before approval
- Presentation of technical solutions before the customer or inspector

CANECO key benefit — linking calculations to the norms and standards of a specific country

INFOCOM LTD IT-competencies

Business solutions

MES, APS Production management & planning

LIMS Laboratory information systems

WMS Warehouse management & logistics

Material Flow Management

Corporate informational systems

Mobile Applications for business & staff

Architecture & systems

Corporate IT-systems design & implementation

Company IT-infrastructure development

Integration with ERP / MES / SCADA

Design of on-prem / hybrid infrastructure

Technological stack

Backend

.NET (C#, VB.NET), Python, Java, C++, Microsoft SQL Server, Oracle, MongoDB, Neo4J, Pyton

Frontend/Mobile

JavaScript, Android (Kotlin, Java) iOS Swift

Infrastructure&Security

Active Directory, VPN, Firewall

PRODUCTION PLANNING

- Making a production programme (plan) for a year with the possibility of various options modelling
- Making a production plan for a given period (month, week, day, shift)
- Calculation of production needs (materials, tools and raw materials) for a given period of time and on an out-of-order basis
- Plan-fact analysis
- Prompt adjustment of the plan (based on actual production figures and changes in the order book)
- *Production dispatching*

MATERIAL FLOW MANAGEMENT

In production of railway wheels:

- Weight accounting (truck and railway scales)
- Management of macrostructure analysis laboratory and mechanical properties of the railway
- Warehouse management of raw materials, blanks and finished goods
- Managing the materials flow through production areas (heat treatment, press rolling, machining, non-destructive testing)
- Production dispatching
- Equipment delay description



WAREHOUSE MANAGEMENT

Warehouse operations automation

- Addressed storage
- Identification with barcodes or RFID
- Reception and distribution of raw materials and finished goods
- Transfer of raw materials and supplies
Delivery of raw materials to production on request
- Materials issue for production and warehouse return
- Inventory
- Integration with ERP systems Warehouse state

INFRASTRUCTURE FACILITIES

Building life dispatching and support systems

- Heating (boiler plants, heating stations)
Power supply and lighting
- Ventilation and air conditioning
- Refrigeration supply centres and stations
- Air intake and pumping stations
- Various sensors, including temperature, humidity, CO2 and water leakage sensors
- Elevator facilities
- Fire safety
- Energy metering, Audio/Video



WATER TREATMENT

Control system of water treatment plants

- Biological water treatment
- Mechanical water treatment
- Sludge treatment
- Electrolysis plants
- Aerotanks - settling tanks
- Amination and phosphating unit
- Disinfection, deferrization and desalination



OIL EXTRACTION PLANTS & SILOS

- Seed receiving and storage
- Winnow-hulling shop (WHS)
- Oil pressing shop
- Oil cake and husk granulating shop, receiving and transportation
- Hydration area
- Lecithin production & storage area
- Oil storage area
- Oil cake and husk receipt and transportation area
- Control system of artesian water intake
- Integration system of deaerator and cogeneration plant area
- Control system of the electric filter operation modes
- Dispatching office of oil extraction factory
- Silo logistics automation
- Electric supply & monitoring



SILO LOGISTICS AUTOMATION (Tracking system)

- Data for machines that have been unloaded and machines waiting to be unloaded
- Tracking of transport movement on the territory based on RFID tags and barcodes
- Recognition of car/railway licence plate numbers
- Data on the amount of grain unloaded
- Automatic data transfer from the weighing system
- Online access to reports
- Non-singular sampling



METALLURGY

Innovative solutions for areas:

- Desulphurisation of cast iron with granular magnesium
- Gas-oxygen refining unit
- Gas-oxygen converter
- Electro slag remelting unit
- Ladle furnace and arc furnace

- Gas cleaning of exhaust gases
- Strip feeding into the mold CCM
- Crushing, dosing and injection of ferroalloys into the hot melt



CRANES AUTOMATION

Bridge, casting, grab, portal cranes

- Conversion of cranes to radio control
- Swing control system, QC hydraulic skew control
- RMG skew control with Micro Motion
- Weighing system
- Vehicle positioning
- Collision avoidance
- Surface scanning
- Condition monitoring



SEMICONDUCTOR PLANT

Automation & dispatching of the following technological areas:

- Hydrogen synthesis
- Synthesis of HCl
- Synthesis of trichlorosilane
- CVD reactors
- VGR
- Polysilicon finishing
- Material flow management

AEROSPACE INDUSTRY

Control system & power supply:

- Missile maintenance towers;
- Solid rocket fuel production systems:
 - Ferrocene production;
 - Aluminum powder production;
 - Ammonium perchlorate production;
 - Oligobutadiene production.

SCOPE OF WORKS:

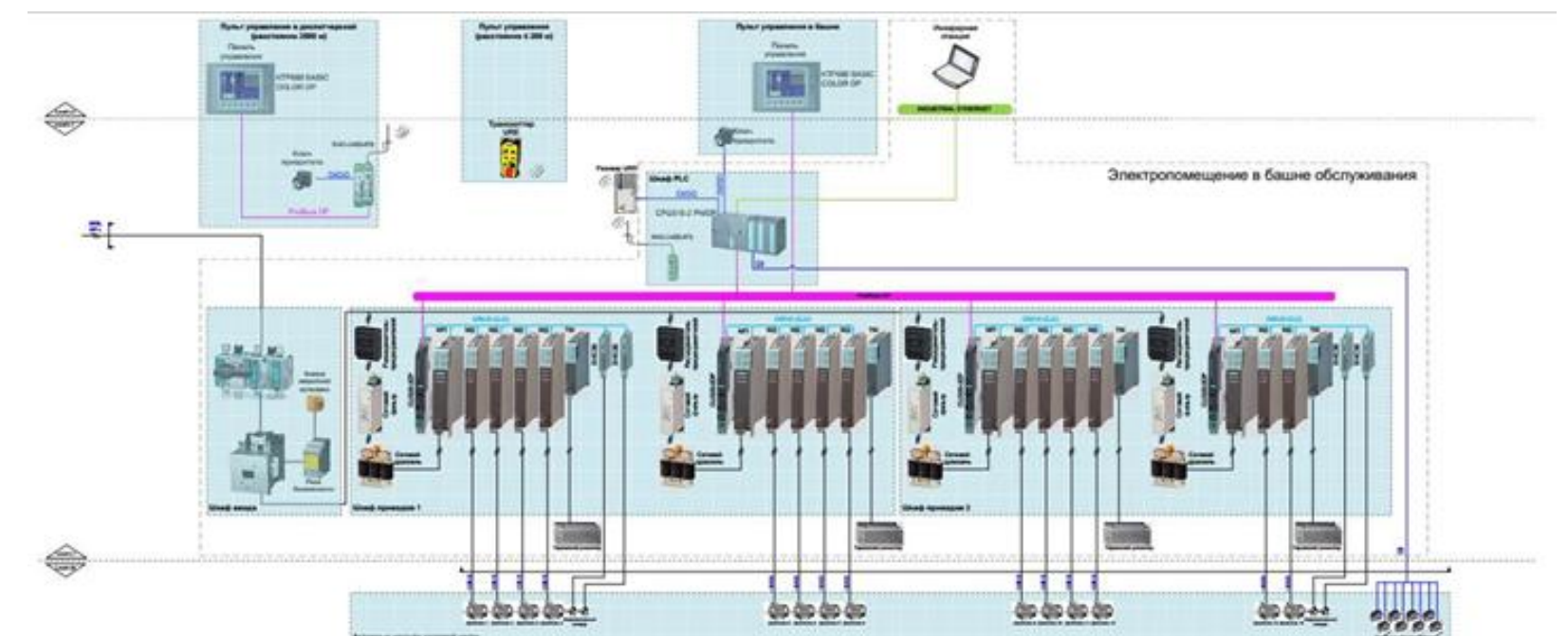
Design & SW development

Cabinets production

Equipment supply

Installation

Start up





PHARMACEUTICALS

Automation of the following technological areas:

- Ampoules cleaning line
- Packing machines
- Pharmasulin production line
- Steam sterilizer
- CIP-station

CHEMICAL INDUSTRY

Automation of the following technological processes:

- Manufacturing of purified TiCl_4 for pigment titanium dioxide production
- Production of sponge titanium
- Production of titanium slabs
- Material flows



ENERGY INDUSTRY

Nuclear power plants, thermal & hydroelectric power plants

- Electrostatic precipitators
- Turbine generators
- Flue gas emission control system
- Data transmission system in SNF containers
- Main control panel



BOILER HOUSES of different fuel type

Automation and dispatching

- Monitoring of diesel generator set status from operator station
- Automatic control of boiler units, water treatment plants, plant-wide tasks
- Control of parameters:
 - boilers, deaeration units
 - installations for media heating
 - water treatment plants
 - boiler supply systems for fuel oil, diesel and diesel fuel
 - compressed air supply systems



HIGH-VOLTAGE SUBSTATIONS

Construction & modernization of WPP

- Design of relay protection
- Monitoring
- Dispatching
- Support of protocol MEK 61850, MEK 60870-5-101; DNP V3.0, SICAM, WinCC OA, SCADA system

ALTERNATIVE ENERGY

Solar power stations

- EPC contracting
- Business plan development
- Design, delivery and commissioning
- Construction and mounting works
- Monitoring and dispatching system
- Hybrid power supply systems
- Automated system for uploading forecasts to regulators' systems



OFFSHORE PROJECTS

Systems for offshore projects

- Intelligent Monitoring and Control System (IMAC)
- Process Information Management and Acquisition system (PIMAQ)
- Ventilation and air conditioning system
- Power Management System (PMS)
- Monitoring and dispatching system
- Emergency Shutdown System (ESD)
- Fire Fighting System (FIFI)



OIL & GAS SECTOR

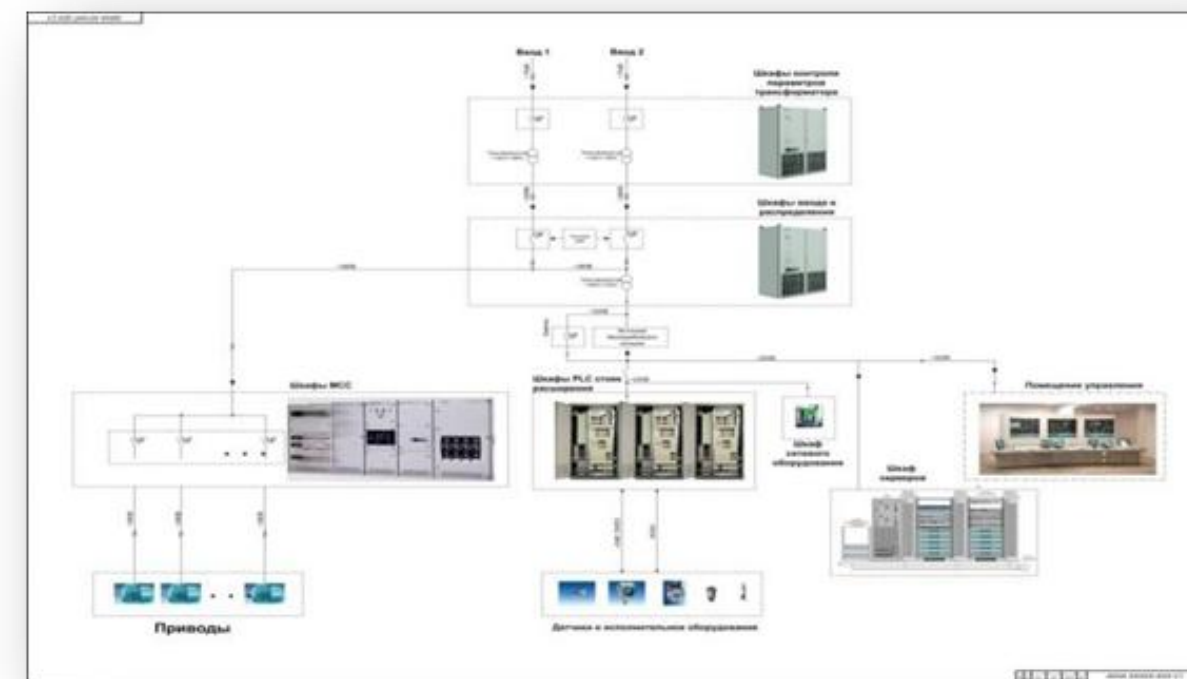
Automation & dispatching

- Intelligent monitoring and dispatching system
- Production data collection and management system
- Remote monitoring of wells
- Integrated solutions for energy automation and distribution
- PLC, SCADA software development

SWITCHGARE AND ELECTRICITY SUPPLY

Design and manufacturing of power distribution systems

- Energy supply systems
- Power distribution systems
- Uninterruptible power supply systems
 - permanent power supply
 - uninterruptible power supply



Cabinets & low-voltage distribution boards production

- PLC SCADA Cabinets, 0.4 kV control panel, automatic transfer switch
- DRIVE cabinets for frequency converters
- MCC SIVACON S8 0.4 kV 7400 A Cabinets
- Medium voltage 6-35 kV
- Power distribution cabinets
- Reactive power compensation Cabinets
- Main dispatching panel
- Server/Data centre cabinets, network/SCS cabinets
- Lighting cabinets



ENERGY STORAGE SOLUTIONS (BESS)

Container-type energy storage systems of rated capacity

PCS 40-2 500 kw / BESS 40-2080 Kwh

dimensions of 10, 20, 40 pound containers

- Relay protection
- Monitoring Dispatching
- Supported protocols IEC 61850, IEC 60870-5-101, DNP V3.0, SICAM,
- WinCC OA SCADA system

EV CHARGING STATIONS MANUFACTURING



- Variants of connector set CHAdeMO, CCS $\frac{1}{2}$, Type $\frac{1}{2}$, GB/T, NACS
- Variants for voltages 7-320 kW with power sharing system
- Charging station for AC/DC charging
- Charging station for DC/DC charging
- Charging station for AC/AC charging
- UGV Chargers mobile application is an online service for charging electric vehicles and paying for sessions, as well as a platform for technical monitoring and dispatching

SOLUTIONS FOR MUNICIPAL TRANSPORT – UNMANNED TECHNOLOGIES





You can receive additional information or technical consultation by sending your request to our e-mail:

✓ sales@ia.ua

or contacting our office for a consultation by phone:

✓ +38 (061) 213-78-55
+38 (067) 616-87-58
+38 (050) 341 71 09

+38 050 341-71-09

+38 067 616-87-58

sales@ia.ua

